

#SPSVisio

December 1st, 2012

Visio Services in SharePoint 2013


Visualizing Business Processes

Nik Charlebois
Senior Technical Advisor
Library and Archives Canada
NikCharlebois@IgniteSoft.ca

SHAREPOINT **SATURDAY**
■■■■■ ■■■■
OTTAWA

About Me



- Started working with SharePoint 2003
- Microsoft Certified Technology Specialist
- “True Developer at heart”
- @NikCharlebois 
- Blog with Demos: <http://NikCharlebois.com>
- **GCTube.ca** for the SharePoint 2010 session's recording



What's this Session About?



- Introduction to the Visio Business Intelligence Features
- No Visual Studio or coding involved
- Topics Covered:
 - Basic Features offered by Visio Services
 - Data Connected Diagrams
 - Visio-Powered Workflows
 - Advanced Dashboards
 - Visio Mashups



What's this Session About? [...]

Everything you'll learn in this session is applicable for both on premises and for the Cloud

Remember: Visio Services are just way too cool to be ignored



What's the Visio Service Anyway?

- First introduced with SharePoint 2010;
- SharePoint Service Application;
- Allows to share up-to-date diagrams with organization **without requiring the visio software on each computer;**
- Allows to create rich and dynamic data connected diagrams for Dashboarding;
- Allows users to collaborate on Visio Diagrams;



What's New in Visio 2013

- New file format (.vsdx) allows for both Client and Web rendering;
- All diagrams in Visio Services use Raster Rendering (no more Silverlight);
- External Lists are now supported as a data source;
- New Comments API allow users to add comments to a diagram on the web;
- Connect to External Data Sources using the SharePoint Secure Store;

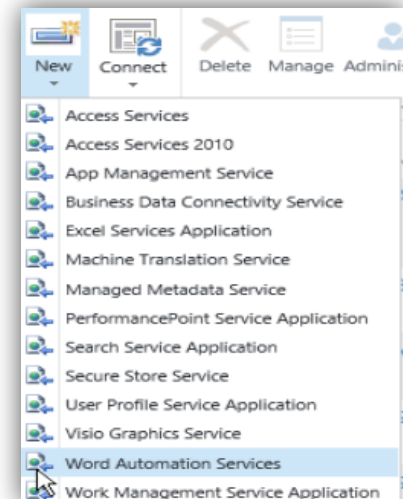


Requirements

- Need Visio Professional to Edit and Publish to SharePoint 2013 server
- Visio Graphics Service need to be running



- Requires the Visio Graphics Service – Service Application
- Requires the SharePoint Server Enterprise Site Collection features **Site Collection** feature to be activated



Comments API

- Allows to collaborate on diagrams and dashboards;
- Integrates with Presence Information (requires Lync);
- Provides an easy way to take annotations and add comments to diagrams;

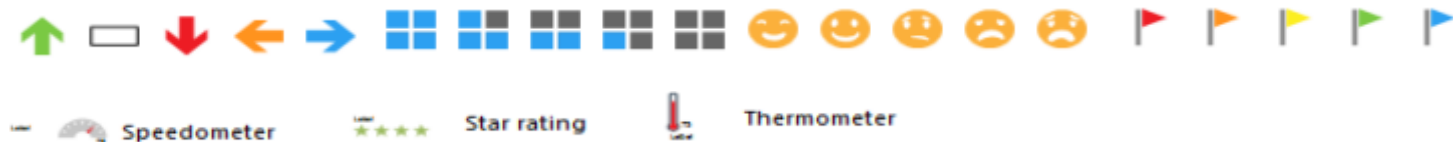


Demo 1 – Share Basic Diagram



Data-Connected Diagrams

- Introduced with Visio 2007;
- Allows you to connect data from external sources to diagrams:
 - SQL
 - SharePoint (Now supports BCS);
 - Excel Spreadsheet;
 - Access
 - OLEDB or ODBC;
- Ability to add data graphics to Shapes

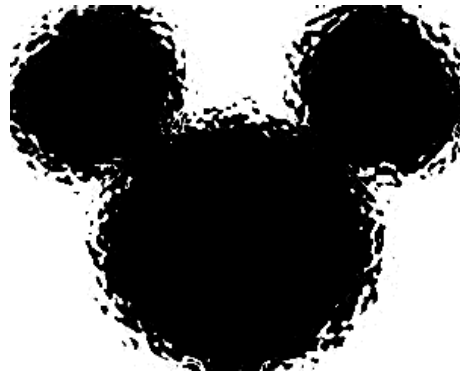


Data-Connected Diagrams [...]

- Possibility to create your own Smart Shapes;
- Possibility to create your own Data Graphics;



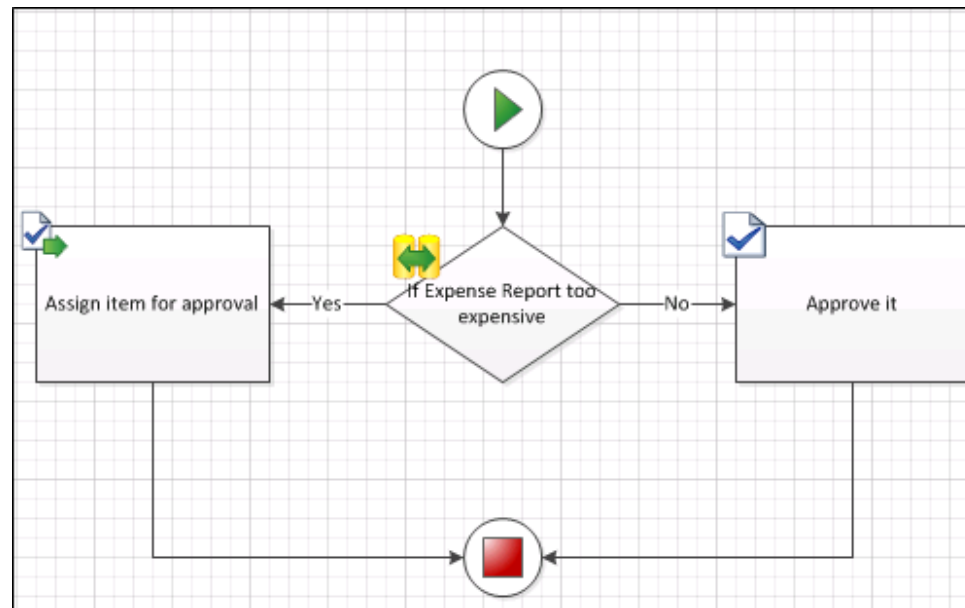
Demo 2 – Data Connected Diagram



Workflows with Visio

The Workflow story with Visio 2010:

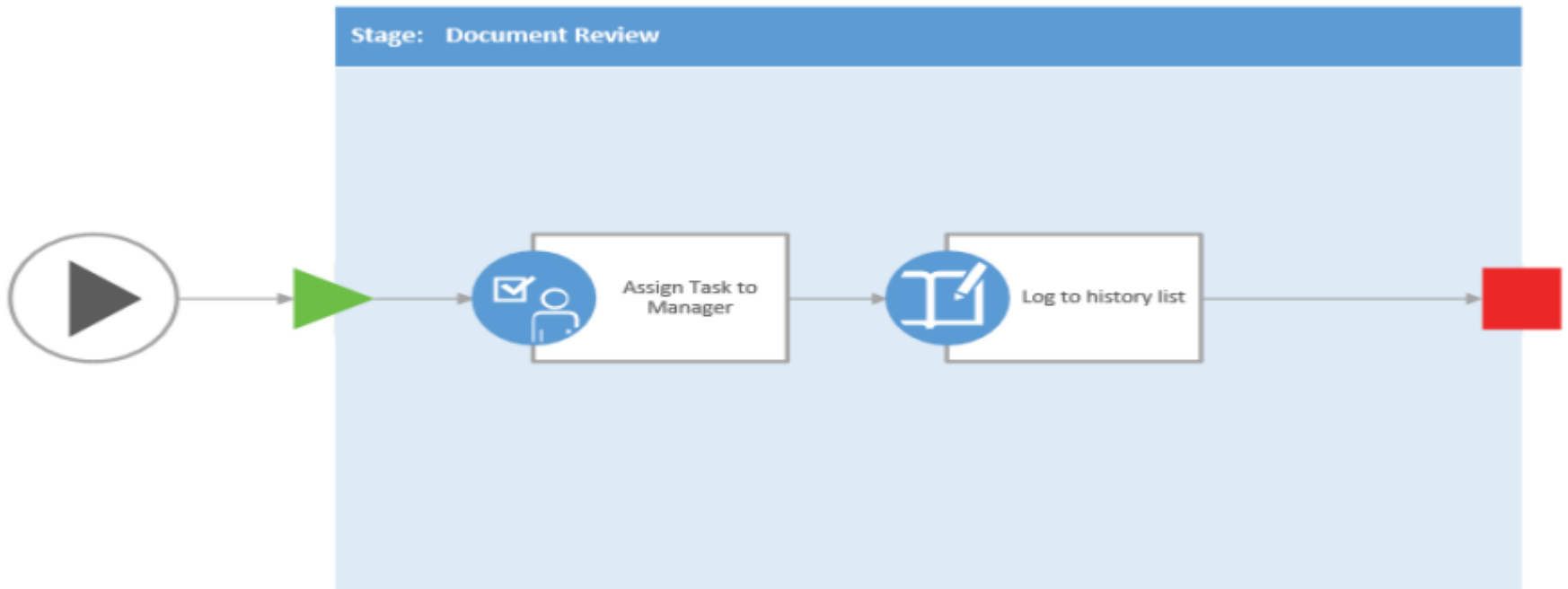
- Step in the right direction;
- Missing step between workflow creation and logic implementation;



Workflows with Visio [...]

With 2013:

- The shapes are uglier...



Workflows with Visio [...]

...but it gets better:

- Logic blocks are now grouped into Stages;
- It supports loops! (made 2010 crash)
- Adds new Actions (e.g. Call HTTP web service)
- Introduces the Visual Designer;



Requirements for SharePoint 2013 Workflows

- Workflow Manager 1.0 (Server Bits)
 - Service Bus included
- Workflow Client 1.0 (Client Bits)
- Secure Store Service Application
- Security Token Service Application
- App Management Service Application
- Need to register an App Domain
- Subscription Settings Service Application



Demo 3 – Workflows



Data Refresh

- Ability to automatically have the data refreshed by configuring the webpart's settings;
- Need to configure the Cache Timeout values in the Service Application;

Minimum Cache Age

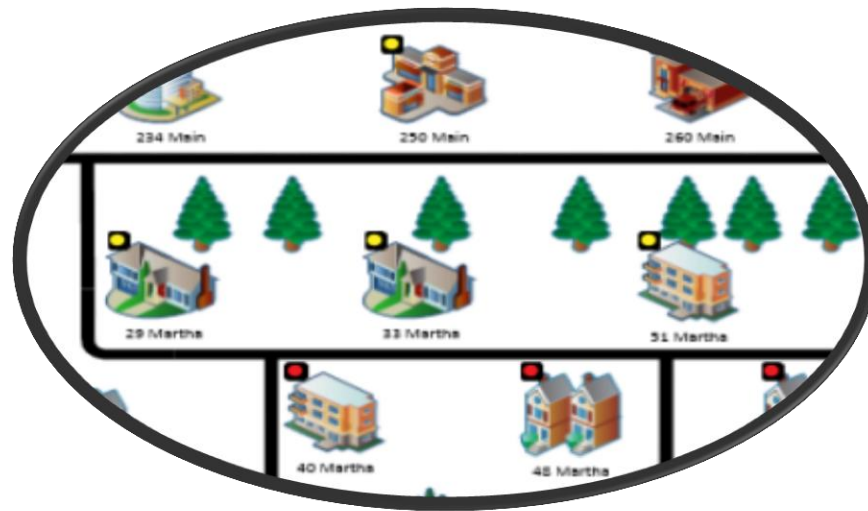
The minimum number of minutes (between 0 and 34560) that a Web Drawing is cached in memory. Smaller values allow more frequent data refresh operations for users, but increase CPU and memory usage on the server.

Maximum Cache Age

The number of minutes (between 0 and 34560) after which cached Web Drawings are purged. Larger values decrease file I/O and CPU load but increase memory usage on the server.



Demo 4 – Dashboards



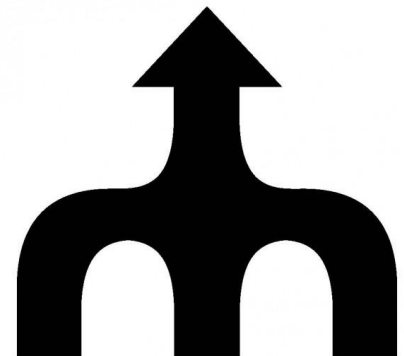
What are Mashups

By definition, they are:

A Web Application hybrid that uses and combines data or functionality from two or more sources to create new services.

For Us:

Something cool we can achieve by connecting the visio diagram webpart to other SharePoint pieces;

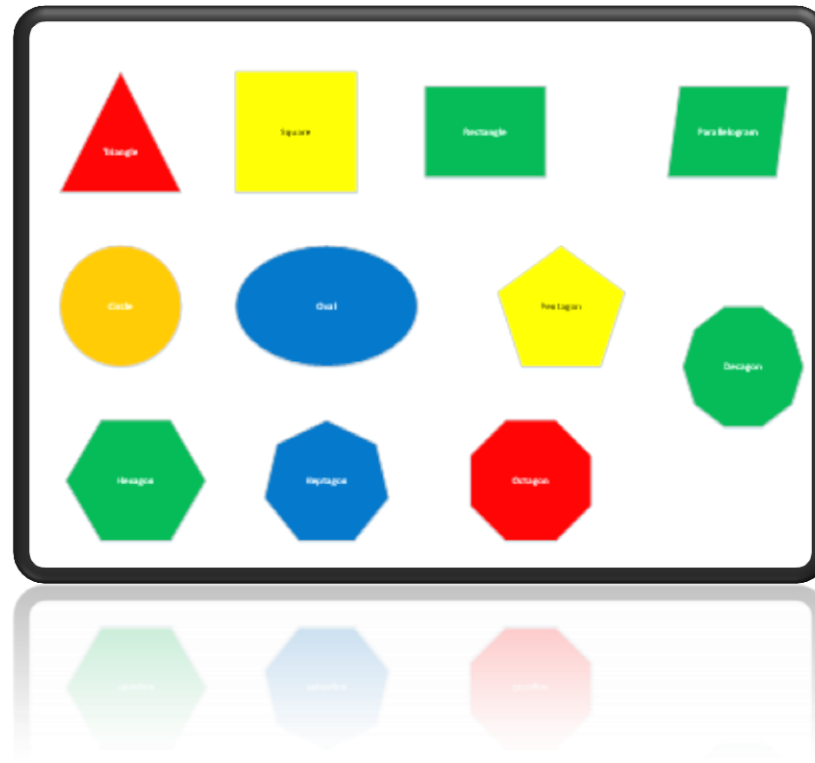


Visio Mashup

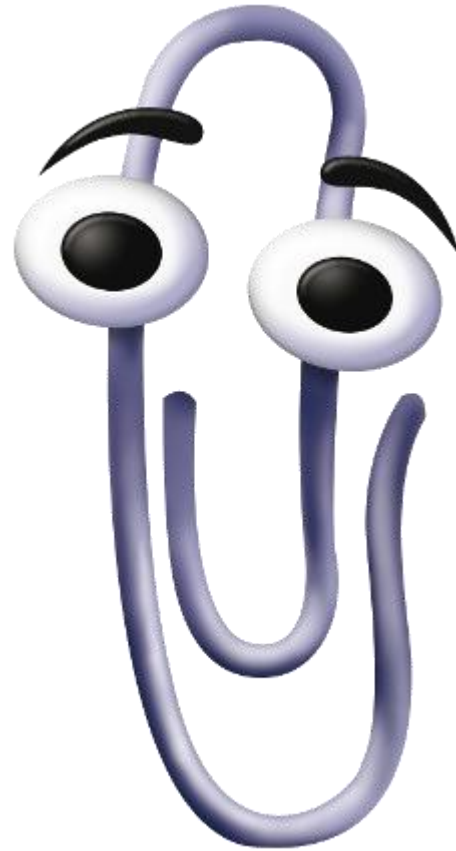
- The Visio Web Access web part allows for connections with other webparts on the page;
- Query the diagram's shapes based on specific values;



Demo 5 – Mashups



Looks like it's
time to ask
questions



Thank you to all of our Sponsors!!



Remember to fill out your evaluation forms to win some great prizes!

&

Join us for SharePint today!

Date & Time: Dec 1st, 2012 @6:00 pm
Location: Pub Italia
Address: 434 ½ Preston Street
Parking: On street with meters \$
Site: <http://www.pubitalia.ca/>